

MURRAY MALLEE AGED CARE GROUP INC.

NEWSLETTER

Autumn Issue



"Sharing the Care"

Welcome

We wish to extend a warm welcome to any of our new Clients that have come onto a CACP's package. You know we are here to assist you in your care and at anytime feel free to contact your Coordinator if you have a problem or not sure about something.

We also welcome new Contract Care Workers that have started with us recently. We hope that you will enjoy working with MMACG and know that you are very much appreciated.

MMACG Board have recently welcomed three new members to the Board. They are Cr. Trevor Kerley representing the Karoonda East Murray Council, Terry Franklin as a Community Representative and Barbara Wingard as an Aboriginal Community Representative. We sincerely appreciate their involvement with MMACG and other members of the Board.

Inside this issue

From the C.E.O's desk	2
Coordinators.....	3
Contractors Meetings	3
Support Workers.....	4
Kaleidescape.....	5
Assistive Technology Project.....	6
MMACG Training Centre.....	7

From the C.E.O's Desk.....

Apart from the locusts and crickets that have invaded our lives of late we have been quite fortunate here in rural SA to have had a reasonably mild and uneventful summer—unlike some of the other States and New Zealand who have experienced horrendous flooding, fires, cyclones and earthquakes. Our hearts go out to all those people who are struggling to re-build their lives —many of them having experienced similar horrors in previous years. Our thoughts are with them all.

....and isn't it so good to see the River Murray and lower lakes in full flow after so many years of depletion? We can only hope that the coming seasons will continue to be kind.

Here at MMACG we continue to be extremely occupied in a number of different projects. Not the least we are now preparing for our 3 year Quality Reporting Accreditation which will be conducted in the coming weeks by our funding department. This is always a “cross the t's and dot the i's” time for us but it is also a great opportunity to look carefully at our service and at the ways in which our processes may be improved. Recently we welcomed several new members to MMACG Board of Management. Cr. Trevor Kerley, who has a vast knowledge of local government is now representing Karoonda East Murray Council; Terry Franklin is well known and active in community—particularly CFS; Barbara Wingard also has an extensive history in community and health services – particularly in area of Indigenous health services. Indeed, we are fortunate to have such a wealth of knowledge and skills on our Board of Management. I trust that our new members will enjoy the board and find the

experience very rewarding. A farewell is extended to Mandy Clothier who served 4 years on Board as the Karoonda East Murray Representative. We have appreciated Mandy's committed contribution throughout her term and we wish her well in her endeavours.

Recently we have introduced an additional service for CACP's clients. Two Social Support Workers Wendy Frahn & Felicity Heyes have been engaged to visit those identified clients, who for various reasons are unable to socialize very much outside of their homes. Initially the support workers will operate in the Mid-Murray, Murray Bridge and Coorong areas. This free service, in essence is, a non-counseling , 'friendly visitor' to clients. The role also extends to hospital visits, respite care and those long term clients who have recently transferred into residential care. If successful, we hope that over time we are able to increase the number of Social Support Workers to cover all areas that we service.

Enjoy the colours of Autumn and Easter Blessings to all. Regards, **Kay**



MMACG CACP & EACH Coordinators



Di Graetz
Senior CACP's Coordinator
Mid Murray, Rural City of Murray
Bridge, Southern Mallee District
and Coorong District areas



Debbie Gower
**CACP's
Coordinator**
Murray Bridge &
Mid Murray



Vicki Cummings
Tumpinyeri CACP's Coordinator
Murray Bridge, Lameroo,
Karoonda, Meningie, Goolwa
& Victor Harbor



Joan Hogan
Registered Nurse &
EACH Coordinator



Contractors Meeting Dates

Held each month

Tailem Bend:-

Last Tuesday @ 12.30pm

Mannum: -

1st Wednesday @ 1pm

Murray Bridge:-

2nd Wednesday @ 1pm

Tumpinyeri—Murray Bridge:-

3rd Thursday @ 12.30pm

Meningie; Tintinara; Lameroo; Coonalpyn &

Southern Fleurieu:-

As arranged by the
Coordinator

It would be appreciated that all Contract Care Workers attend your designated contractor meetings in order that you are kept up-to-date with any issues.

A reminder to Contractors that you need to keep up-to-date your Manual Handling; Senior First Aid; Accreditation in Medications and your Police Check. If you need assistance with the above please do not hesitate in contacting your Coordinator.

MMACG would like to acknowledge the ongoing commitment of all Contracted Care Workers in assisting our Clients to remain independent in their own homes.

“Pleasure in the job puts perfection in the work”

- Aristotle

Introducing our Social Support Workers



Wendy Frahn



Felicity Heyes

If you are interested in discussing this new free service then give Di Graetz a call at the office.

Introducing our Maintenance Worker



Pete Mounce

Many clients and contractors will already be familiar with Pete who spends his days assisting with gardening, “fetching and carrying” and maintaining client equipment. Pete is a quiet achiever who is always ready to help when called upon.

Locust Situation—2011

In South Australia immature adults locusts often form dense swarms in late autumn, which can persist throughout winter in woodlands and tree lines along rivers. Immature adults can also undertake migratory movements during autumn, which could result in redistribution and increases in density in other regions.



Driving through locust swarms can be hazardous because they can obscure your view of the road and other traffic. They can also block radiators, potentially causing vehicles to overheat. If you are planning to drive through areas with reported sightings of adult flying locusts, you should consider following:

Before driving stretch soft plastic flywire or shade cloth over the car’s grille, fixing it in place with masking tape or plastic zip ties.

Kaleidescape

Here we are again in autumn, and haven't our gardens flourished this year instead of burning to cinders. All the more food for the locusts and the crickets that are on their way.

We have started the year off without any cancellations due to heat, which makes a nice change, compared with other years where we have had prolonged heatwaves.

A variety of entertainment has been organised for this year along with some very interesting guest speakers and excursions that will be very enjoyable to everyone.

As indicated on the activities days, the bus is now fully operational and is being put to good use. By all indications from passengers, it is very comfortable to ride in. I must say the bus is very easy and enjoyable to drive.

I hope everyone enjoyed the Christmas party last year. All the staff had a great time organising the day for you.

Welcome to the two newest members of the Kaleidescape team, Sue Baxter and Bec White who have joined us over the past couple of months. I hope you enjoy your days with us and I am sure you will be welcomed by all members of the group.

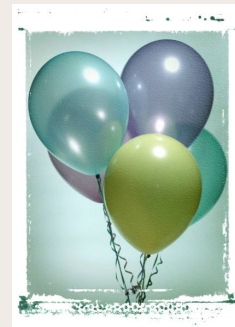
Don't forget these days are for you and we enjoy having your input. Throughout the year, I will be asking all participants to fill out feedback forms, so we can recognise areas where we can improve our service to you.

A big thank you to the staff and volunteers of Murray Mallee Aged Care and Helen, Kylie and Kelly from the Rural City of Murray Bridge for their tireless efforts that go into presenting the Kaleidescape days.

I would like to take this opportunity to wish everyone a very Happy Easter and keep safe.



Sharron Cocker
HACC Coordinator



Birthdays

We wish a very Happy Birthday to all our Clients that have just celebrated or about to in the next coming months. May it be a special day for you.

Achievement Award

Congratulations to staff members of MMCAg— Debbie Gower & Jasoda Devi for completing their Certificate IV in "Home and Community Care"

Well Done!

Seasonal Influenza (Flu) Vaccination

You should consider in having a Flu Vaccination if you are:

- ◆ 50 years of age and older
- ◆ Have certain chronic medical conditions
- ◆ Live with or care for those at high risk for complications from flu
- ◆ Work as a Health Care Worker



The 'Linking Rural Older People to Community Through Technology' Project

Well the time has certainly flown by since I commenced with MMACG in January this year. I have managed to attend a number of Contractor meetings with the Coordinators and popped in at the Murray Bridge Kaleidescape group in their new setting. I have also attended numerous network and industry meetings particularly focusing on the new Aged Care Reforms within the Community Aged Care Services.

MMACG's CACP's Client Evaluation Survey undertaken last year identified a request for more personalised informal and shorter duration bus outings. With the recent purchase of our bus we are keen to offer these outings and would love to hear of your suggestions for days, times, locations and length per trip.

If you or anyone you know who is a CACP client and would like to register an interest in participating in these short trips please give me a call here at the office.

MMACG's Assistive Technology Project has just gone through the busy and exciting process of setting up our first Pilot Project which involved the purchase, supply and distributing of computer equipment (either Lap tops or I Pads) into the pilot participants homes- forty eight in total, spread across the Riverland and Murrayland regions.

We hope all of those involved are enjoying their new technology and we look forward to the results of the next six months pilot.

"This project is funded by the Australian Government Department of Health & Ageing"

Wishing you all a happy and safe Easter

Regards

Bernadette White
Special Projects Officer



Murray Mallee Aged Care Group Inc

Ph: 08 85322255

Ph: 04 1623 2353

techproject@murraymallee.org.au

TRAINING CENTRE & ROOM HIRE— 2a Myall Avenue



Our stand-alone **Training Centre** is situated on the site of Murray Mallee Aged Care Group Administration Centre and is available for hire to community groups and corporate organisations.

The room is suitable for up to 50 people seated theatre style and can be set up in various layouts for smaller numbers and individual requirements. Disabled toilet facilities, access and easy on-site and street car parking available.

Room Equipment:

- Air-conditioning / Heating
- 10 Trestle Tables
- 50 Executive Stackable Chairs

- Lectern/ Wireless Microphone
- White Board
- Photocopier
- Large Smartboard/TV
- Ceiling Mounted Data Projector
- Laptop with DVD
- Wireless Internet available
- Chilled Water Unit

Kitchen facilities:

- Microwave & Oven
- Urn & Kettle
- Fridge
- Cutlery & Crockery for 50

Hire of Training Centre

Business Use:

Half Day (4 hours or part thereof) **\$137.50**

Full Day (over 4 hours) **\$225.00**

Community Groups:

Negotiated Rates

Electronic Equipment:

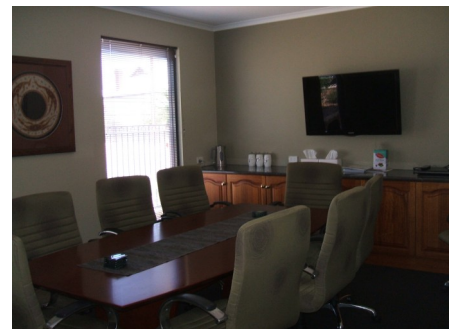
Use of Smartboard
and associated equipment

Note: Prices includes GST



Murray Mallee Aged Care Group's modern **Boardroom** is also available for hire. It is fitted out with a Boardroom table which can seat up to 8 executive boardroom chairs. An additional 4 chairs are available in the room. Coffee & Tea facilities along with a bar fridge is also available for use. A Television is available that can be connected to a laptop for presentations.

**Boardroom
Hire Charges:**
(Mon - Fri
9am to 5pm).
Negotiated Rate





Murray Mallee Aged Care Group Inc.

2a Myall Avenue
(PO Box 1315)
Murray Bridge SA 5253

Phone: 08 8532 2255
Fax: 08 8532 2522
email: admin@murraymallee.org.au
www.murraymallee.org.au

